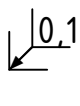
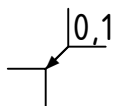
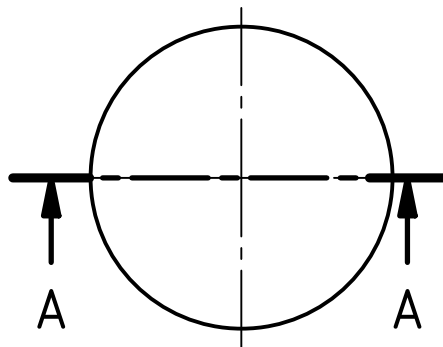
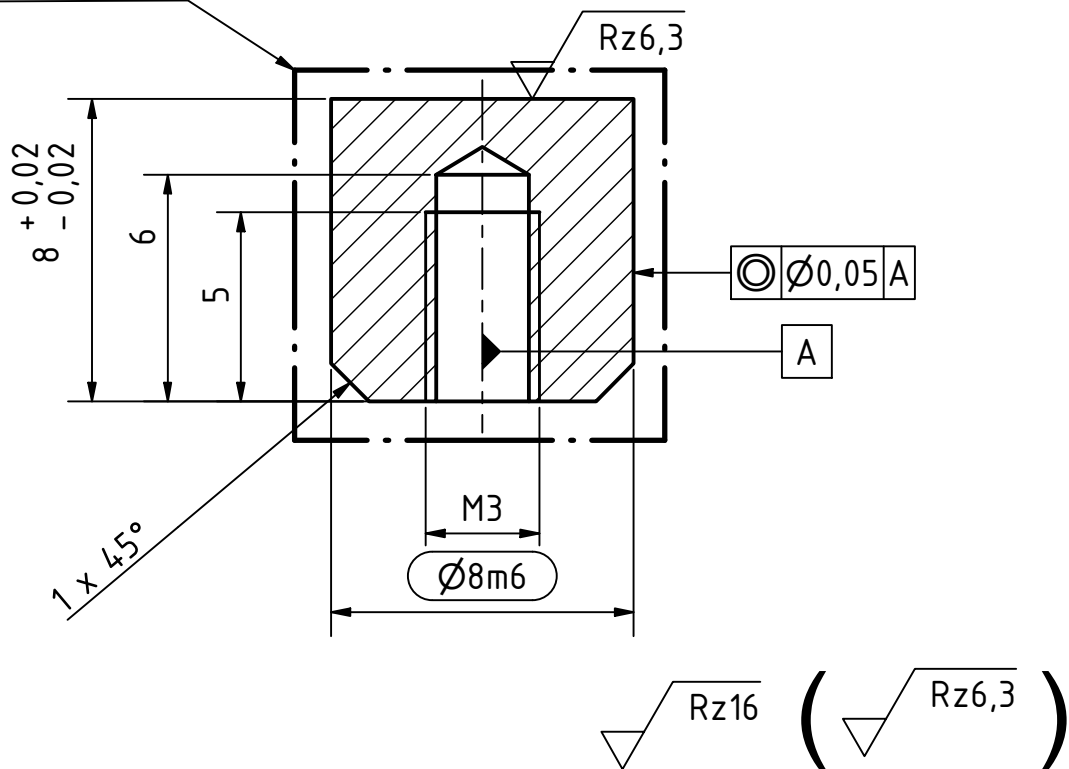


A-A (5 : 1)

hardened and tempered
50+10 HRC



workpiece edges
DIN ISO 13715



general tolerances
DIN ISO 2768-
surfaces
DIN ISO 1302

amount: 1

scale: 5 : 1

material: 1.2210 (115CrV3)

pre-product: Round Bar

designation: Plate Centered Inlay

part number: ITPTv2.01.00.13

field of application: ITkPixTool v2.0

project: Atlas ITk Pixel Modules

date	name
designed: 14.07.2021	Rüdiger Widera
approved: 05.08.2021	Tim Kanngießer
status:	released
part rev.: 1.0	draw.rev.: A



GEORG-AUGUST-UNIVERSITÄT
GÖTTINGEN

2.Physikalisches Institut
Friedrich-Hund-Platz 1
D-37077 Göttingen

Tel.: 0551 3927625
tim.kanngiesser@uni-goettingen.de
ruediger.widera@uni-goettingen.de

sheet
1/1
A4

rev.	alteration	date	name