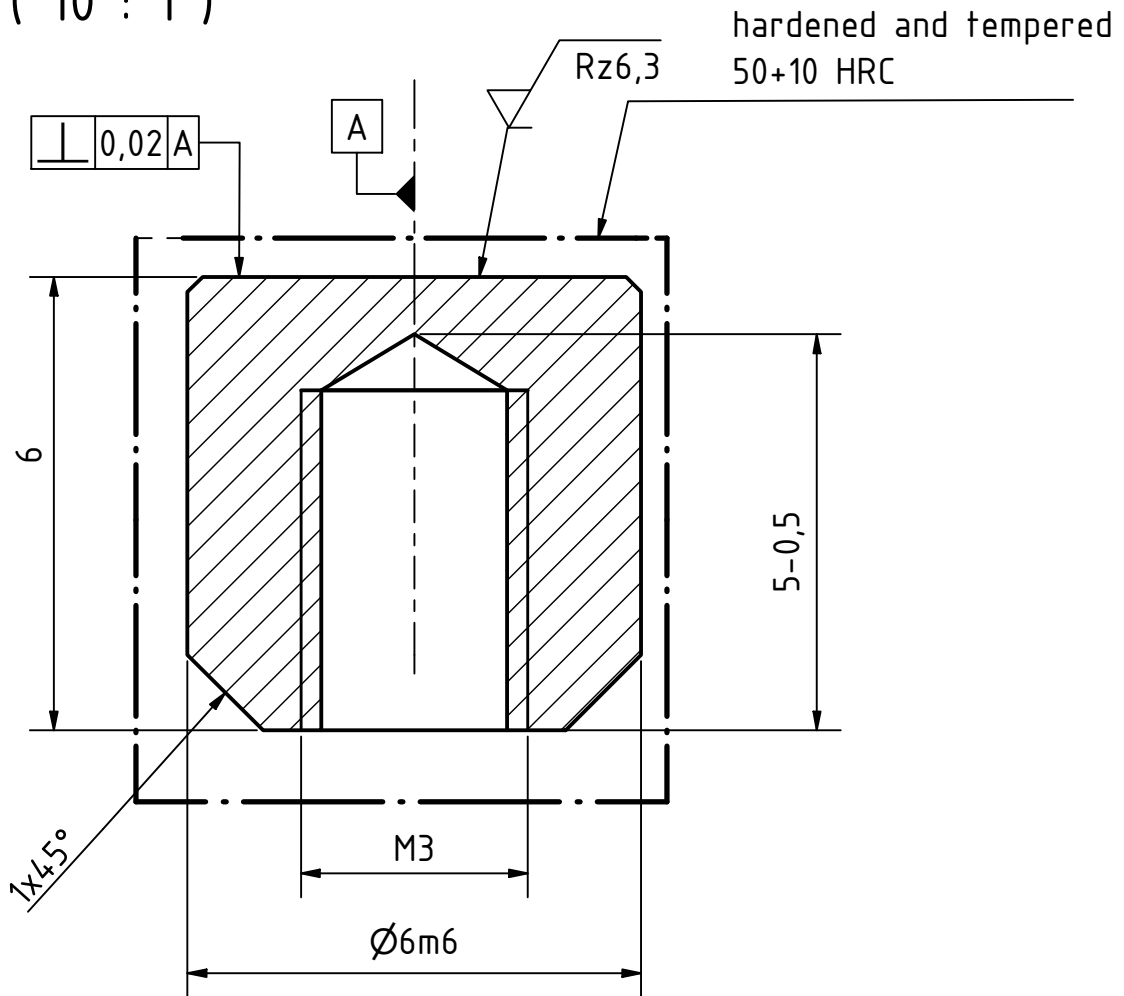
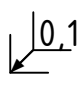
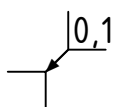
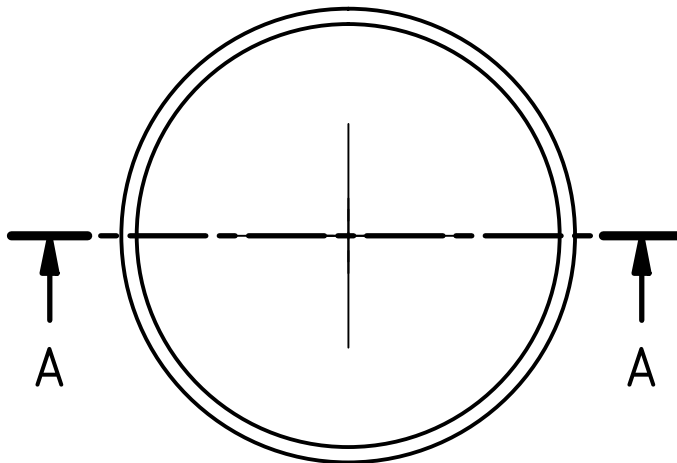


A-A (10 : 1)



Rz16 (Rz6,3)



workpiece edges
DIN ISO 13715



general tolerances
DIN ISO 2768-m
surfaces
DIN ISO 1302

amount: 2

scale: 10 : 1

material: 1.2210 (115CrV3)

pre-product: Round Bar

designation: Plate

part number: ITPTv2.01.00.14

field of application: ITkPixTool v2.0

project: Atlas ITk Pixel Modules

date	name
designed: 08.07.2021	Rüdiger Widera
approved: 05.08.2021	Tim Kanngießer
status:	released
part rev.: 1.0	draw rev.: A



GEORG-AUGUST-UNIVERSITÄT
GÖTTINGEN

2.Physikalisches Institut
Friedrich-Hund-Platz 1
D-37077 Göttingen

Tel.: 0551 3927625
tim.kanngiesser@uni-goettingen.de
rueidiger.widera@uni-goettingen.de

sheet
1/1
A4

rev.	alteration	date	name
------	------------	------	------