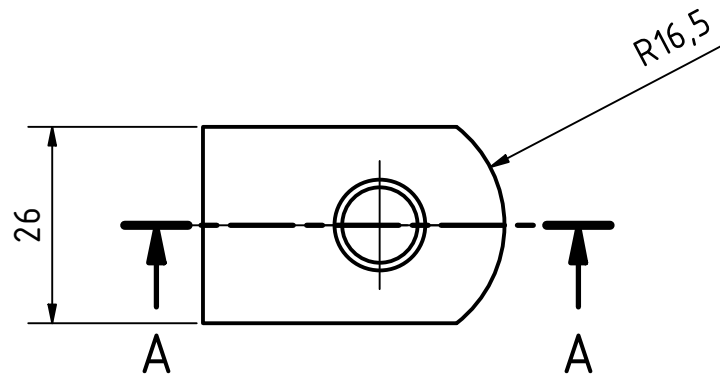


Technical drawing of a mechanical part, likely a bush or sleeve, showing a cross-section with dimensions and tolerances.

Key dimensions and features:

- Overall length:  $39,9 \pm 0,2$
- Distance from left end to start of internal thread:  $23,4$
- Internal thread:  $\varnothing 12 \pm 0,2$
- Internal thread length:  $2$
- Overall outer diameter:  $44$
- Distance from left end to start of internal thread:  $19$
- Distance from left end to start of internal thread:  $20$
- Internal thread:  $\varnothing 10 \text{H7}$
- Internal thread length:  $30$
- Internal thread:  $\varnothing 8$
- Internal thread length:  $6,5$
- Internal thread:  $\varnothing 4,3$
- Internal thread length:  $29,9 \pm 0,2$
- Internal thread:  $R5$



<div><div><div><div></div><div>0.2</div></div><div><div></div><div>0.2</div></div></div><div>deburred edges</div></div>				<div><div><div>workpiece edges</div><div>DIN ISO 13715</div></div><div><div></div><div></div></div></div>				<div><div><div>general tolerances</div><div>DIN ISO 2768-m</div></div><div><div>surfaces</div><div>DIN ISO 1302</div></div></div>				amount: 1				scale: 1 : 1							
								material: EN AW 7021 T6				pre-product:											
												designa <b>tion</b> : Flange quick adjustment part number: ITPTv2.01.00.23 field of application: ITkPixTool v2.0 project: Atlas Itk Pixel Modules											
								date												name			
								designed:												20.07.2021 Rüdiger Widera			
								approved:															
								status:												released			
								part rev.:				1.0		draw.rev.:		A							
												<div><div><div><div></div><div>GEORG-AUGUST-UNIVERSITÄT</div><div>GÖTTINGEN</div></div><div><div>2.Physikalisches Institut</div><div>Friedrich-Hund-Platz 1</div><div>D-37077 Göttingen</div></div><div><div>Tel.: 0551 3927625</div><div>tim.kanngiesser@uni-goettingen.de</div><div>ruediger.widera@uni-goettingen.de</div></div></div></div>											
rev.		alteration		date		name						sheet 1/1 A4											