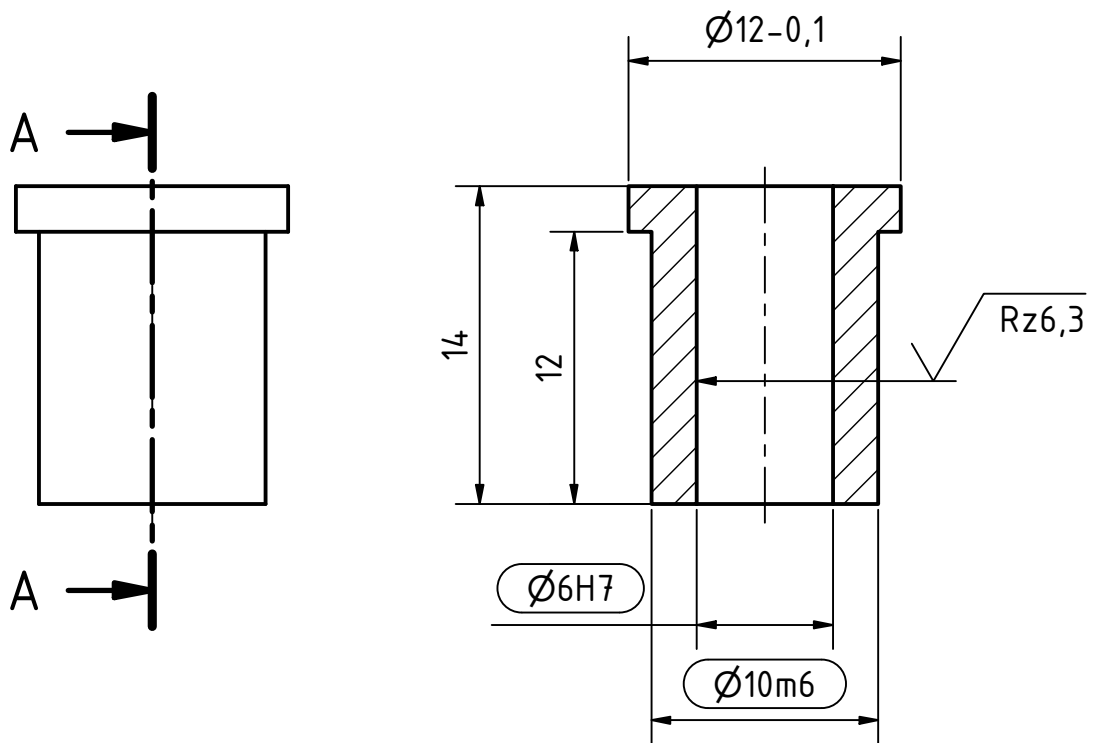


A-A (3 : 1)



Rz16

0,2 0,2
deburred edges

workpiece edges
DIN ISO 13715



general tolerances
DIN ISO 2768-f
surfaces
DIN ISO 1302

amount: 1

scale: 3 : 1

material: CuSn8

pre-product: Round Bar

rev.	alteration	date	name

date	name
designed: 20.07.2021	Rüdiger Widera
approved:	
status:	released
part rev.: 1.0	draw.rev.: A

designation: Slide Bearing Axis

part number: ITPTv2.01.00.24

field of application: ITkPixTool v2.0

project: Atlas Itk Pixel Modules



GEORG-AUGUST-UNIVERSITÄT
GÖTTINGEN

2.Physikalisches Institut
Friedrich-Hund-Platz 1
D-37077 Göttingen

Tel.: 0551 3927625
tim.kanngiesser@uni-goettingen.de
ruediger.widera@uni-goettingen.de

sheet
1/1
A4