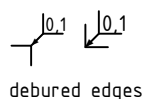
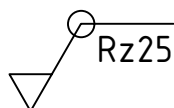
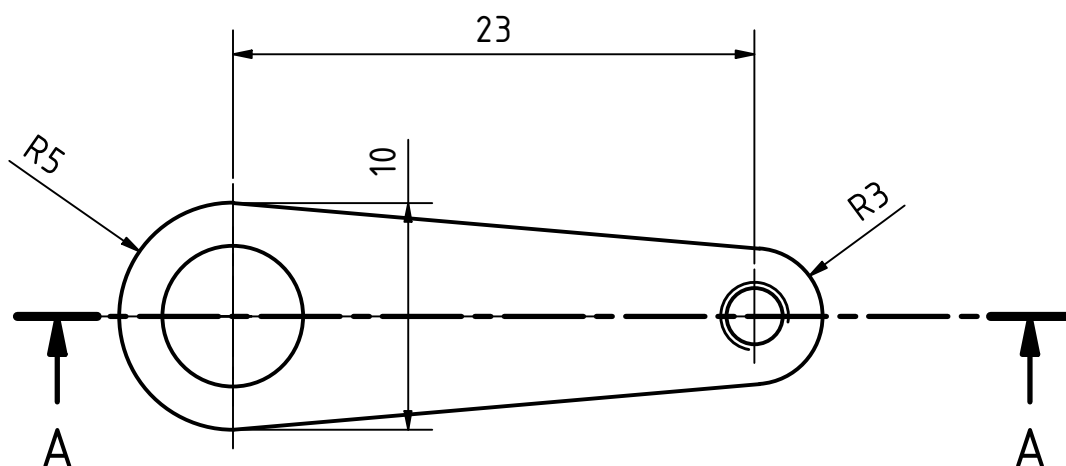
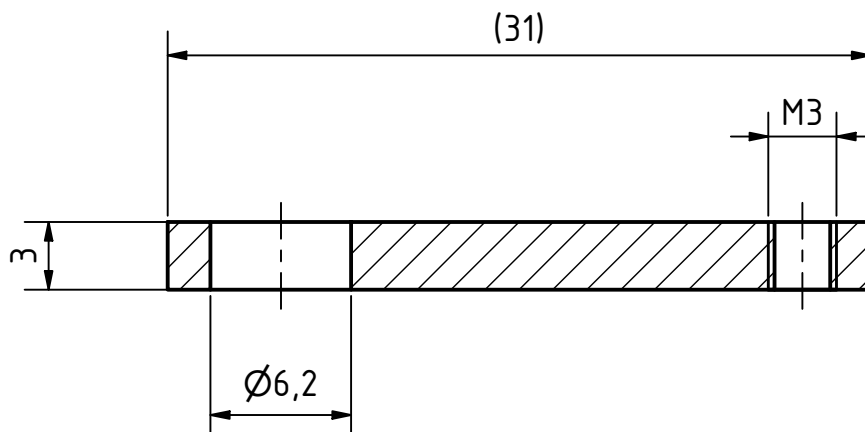


A-A (3: 1)



workpiece edges
DIN ISO 13715



general tolerances
DIN ISO 2768-m
surfaces
DIN ISO 1302

amount: 1

scale: 3: 1

material: CuZn39Pb3

pre-product:

rev.	alteration	date	name

date	name
designed: 20.07.2021	Rüdiger Widera
approved:	
status:	released
part rev.: 1.0	draw.rev.: A

designation: Clamping Lever

part number: ITPTv2.01.00.28

field of application: ITkPixTool v2.0

project: Atlas ITk Tool Modules



GEORG-AUGUST-UNIVERSITÄT
GÖTTINGEN

2.Physikalisches Institut
Friedrich-Hund-Platz 1
D-37077 Göttingen

Tel.: 0551 3927625
tim.kanngiesser@uni-goettingen.de
ruediger.widera@uni-goettingen.de

sheet
1/1
A4