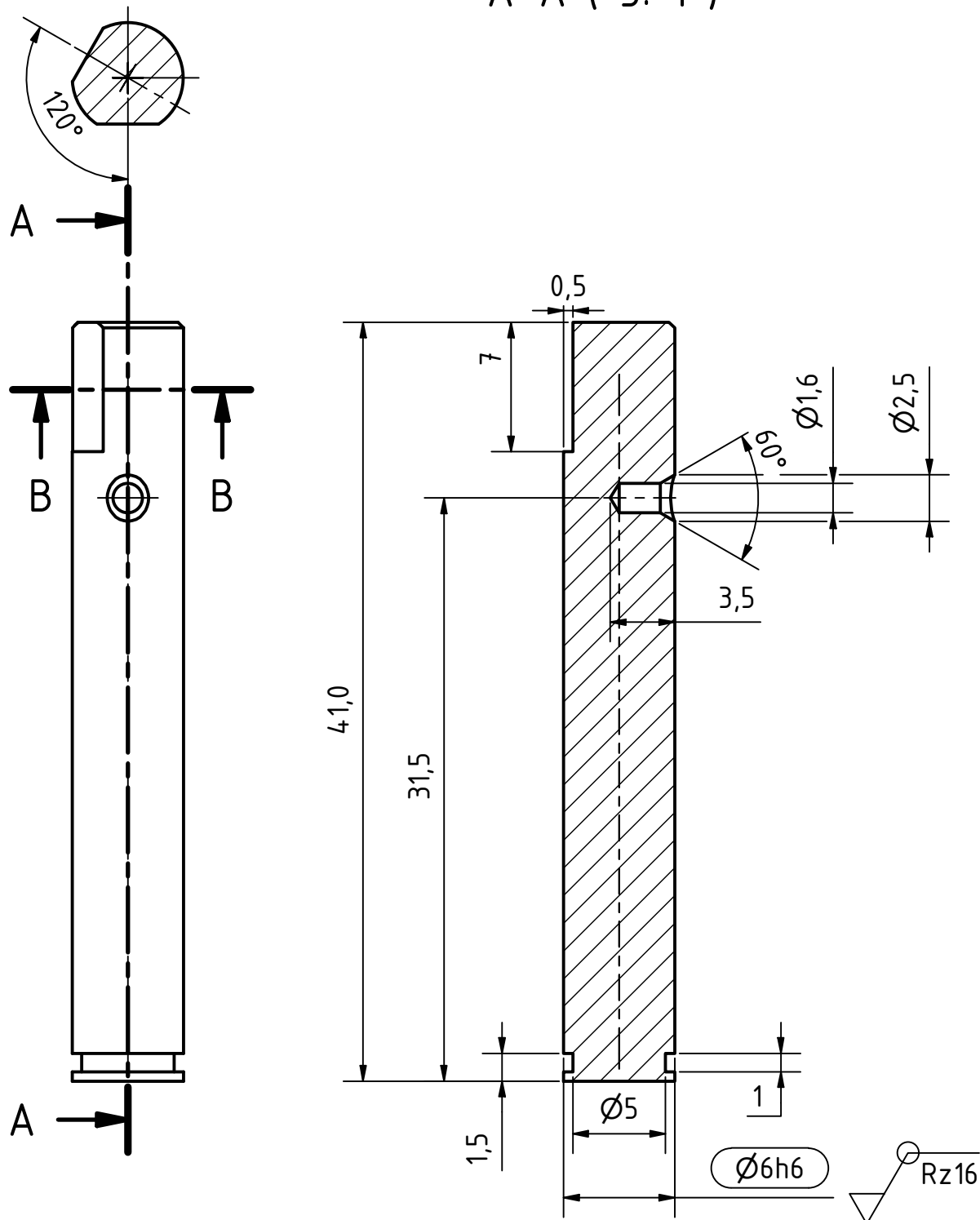


B-B (3: 1)

A-A (3: 1)



0,1 0,1
deburred edges

workpiece edges
DIN ISO 13715



general tolerances
DIN ISO 2768-f
surfaces
DIN ISO 1302

amount: 1

scale: 3: 1

material: X8CrNiS18-9

pre-product: Round Bar

designation: Axis Quick Adjustment

part number: ITPTv2.0.00.30

field of application: ITkPixTool v2.0

project: Atlas ITk Pixel Modules

date	name
designed: 20.07.2021	Rüdiger Widera
approved:	
status:	released
part rev.: 1.1	draw. rev.: A



GEORG-AUGUST-UNIVERSITÄT
GÖTTINGEN

2.Physikalisches Institut
Friedrich-Hund-Platz 1
D-37077 Göttingen

Tel.: 0551 3927625
tim.kanngiesser@uni-goettingen.de
rueidiger.widera@uni-goettingen.de

sheet
1/1
A4

rev.	alteration	date	name
------	------------	------	------