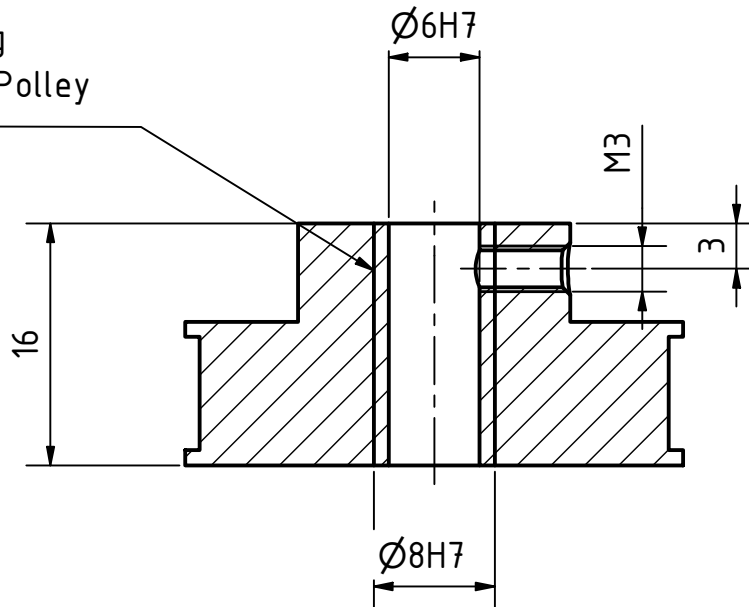
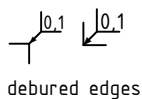


Brass Bushing  
bonding with Polley

A-A ( 2: 1 )



made from purchase part  
Polley Z40\_T2,5x6 Polyacetal



workpiece edges  
DIN ISO 13715



general tolerances  
DIN ISO 2768-  
surfaces  
DIN ISO 1302

amount: 1

scale: 2: 1

material: Polyacetal

pre-product:

rev.	description	date	name	date	name
1.1	brass bushing	17.9.2021	R.Widera	21.07.2021	Rüdiger Widera

designation: Polley Z40\_T2,5x6

part number: ITPTv2.01.00.31

field of application: ITkPixTool v2.0

project: Atlas ITk Pixel Modules



GEORG-AUGUST-UNIVERSITÄT  
GÖTTINGEN

2.Physikalisches Institut  
Friedrich-Hund-Platz 1  
D-37077 Göttingen

Tel.: 0551 3927625  
tim.kanngiesser@uni-goettingen.de  
ruediger.widera@uni-goettingen.de

sheet  
1/1  
A4