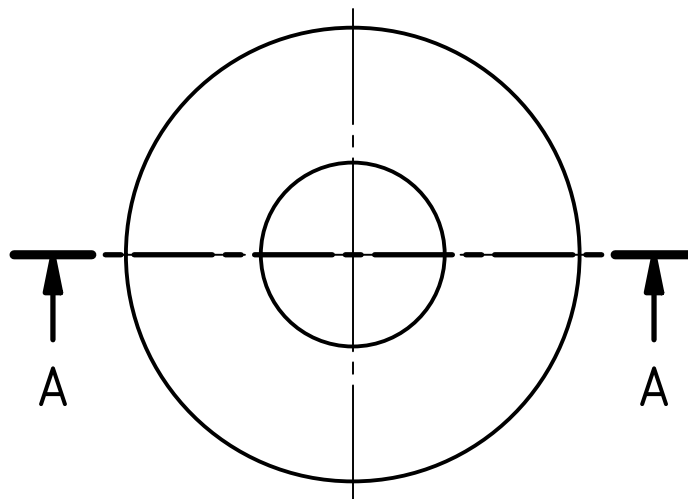
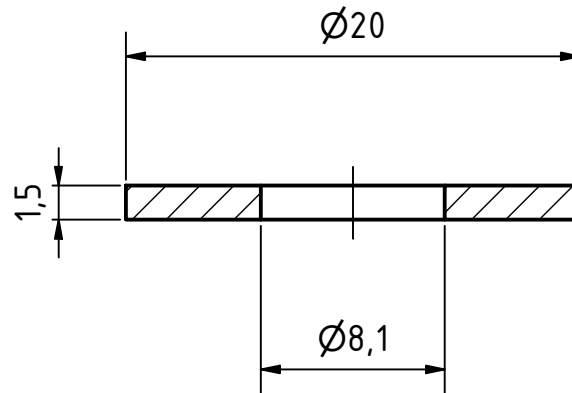


A-A ( 3 : 1 )



0,1 0,1  
deburred edges

workpiece edges  
DIN ISO 13715



general tolerances  
DIN ISO 2768-m  
surfaces  
DIN ISO 1302

amount: 3

scale: 3 : 1

material: POM

pre-product:

rev.	alteration	date	name	date	name
				designed: 03.12.2021	Rüdiger Widera
				approved:	
				status:	
				part rev.: 1.0	draw. rev.: A

designation: Reducing sleeve top  
part number: IPTv2.01.00.37  
field of application: ITkPixTool v2.0  
project: Atlas ITk Pixel Modules



GEORG-AUGUST-UNIVERSITÄT  
GÖTTINGEN

2.Physikalisches Institut  
Friedrich-Hund-Platz 1  
D-37077 Göttingen

Tel.: 0551 3927625  
tim.kanngiesser@uni-goettingen.de  
ruediger.widera@uni-goettingen.de

sheet  
1/1  
A4