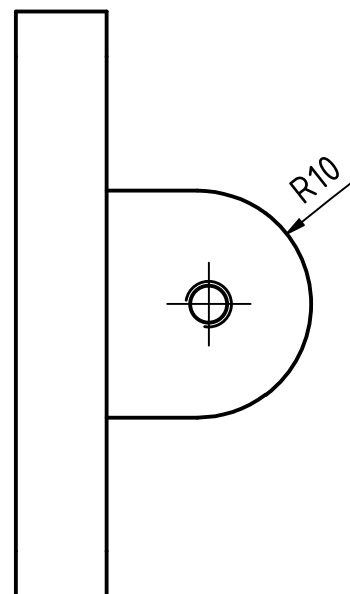
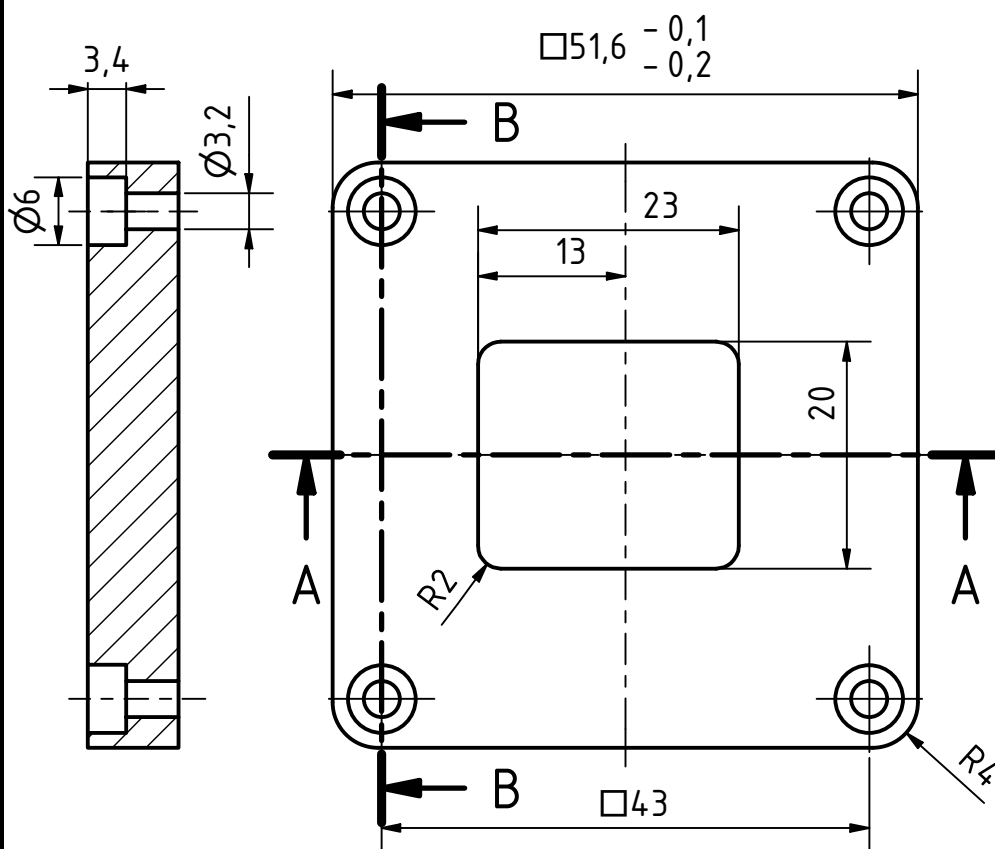
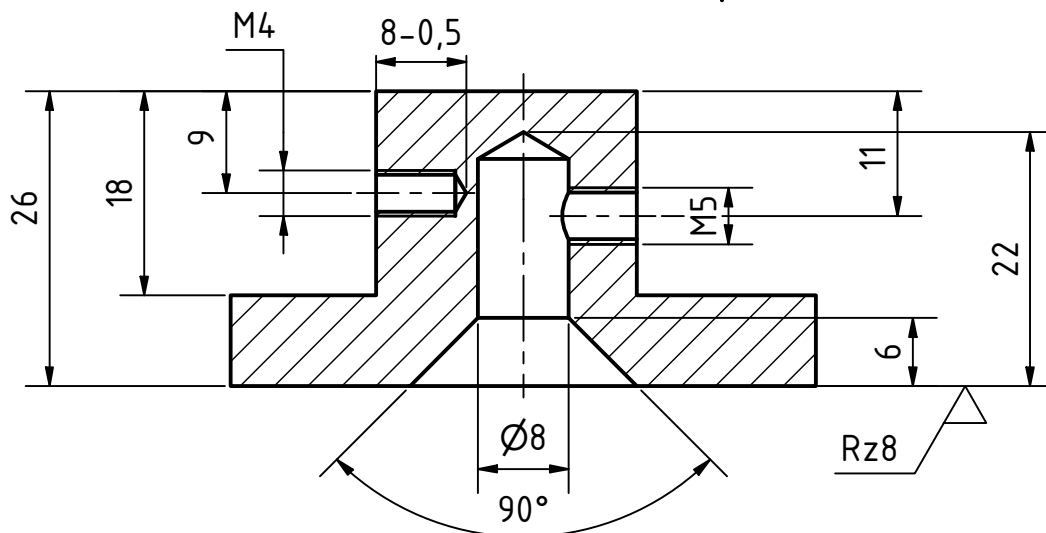
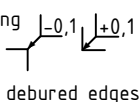


A-A (1,5 : 1)



Rz16 (Rz8)

geometric dimensioning
and tolerancing
DIN EN ISO 1101



workpiece edges
DIN ISO 13715



general tolerances
DIN ISO 2768-m/ H
surfaces
DIN ISO 1302

amount: 1

scale: 1,5 : 1

material: EN AW 7021 T6

pre-product: -

designation: Lid FlexChuck

part number: ITPTv2.02.00.02

field of application: ITkPixTool v2.0

project: Atlas ITk Pixel Modules

date	name
designed: 29.07.2021	R.Widera
approved:	
status:	released
part rev.: 1.3	draw rev.: 0



GEORG-AUGUST-UNIVERSITÄT
GÖTTINGEN

2.Physikalisches Institut
Friedrich-Hund-Platz 1
D-37077 Göttingen

Tel.: 0551 3927625
tim.kanngiesser@uni-goettingen.de
rue diger.widera@uni-goettingen.de

sheet
1/1
A4

rev.	alteration	date	name