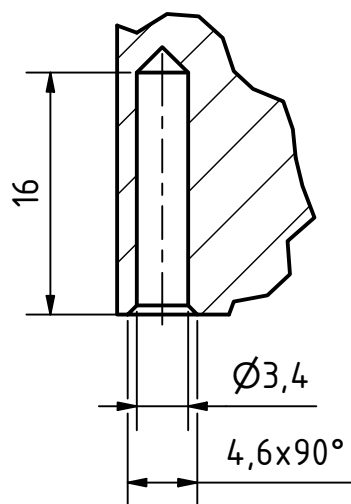
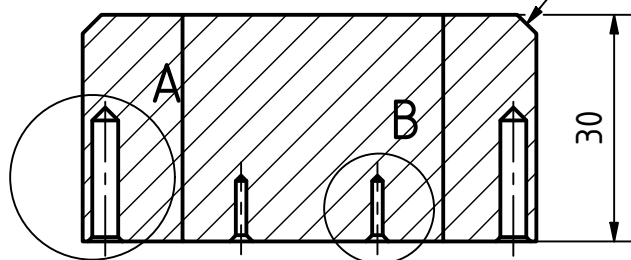


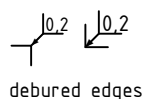
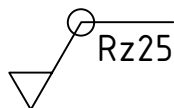
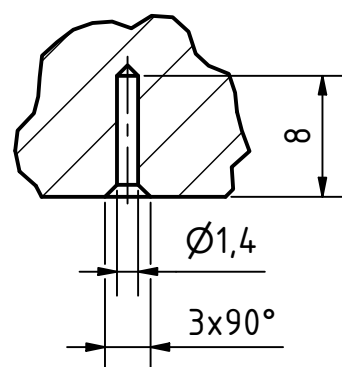
A (2 : 1)



A-A (1 : 1)



B (2 : 1)



workpiece edges
DIN ISO 13715



general tolerances
DIN ISO 2768-m
surfaces
DIN ISO 1302

amount: 1

scale: 1 : 1

material: EN AW 7021 T6

pre-product:

designation: Loading

part number: ITPTv2.02.00.07

field of application: ITkPixTool v2.0

project: Atlas ITk Pixel Modules



GEORG-AUGUST-UNIVERSITÄT
GÖTTINGEN

2.Physikalisches Institut
Friedrich-Hund-Platz 1
D-37077 Göttingen

Tel.: 0551 3927625
tim.kanngiesser@uni-goettingen.de
ruediger.widera@uni-goettingen.de

sheet
1/1
A4

rev.	alteration	date	name

date	name
designed: 28.07.2021	Rüdiger Widera
approved:	
status:	released
part rev.: A	draw.rev.: A