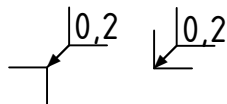
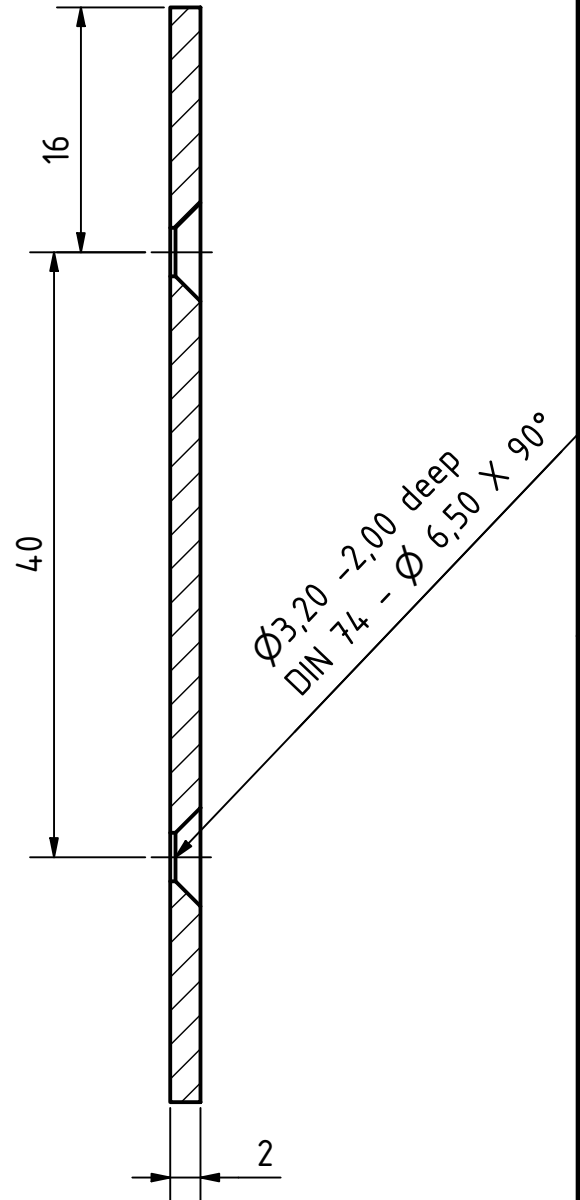
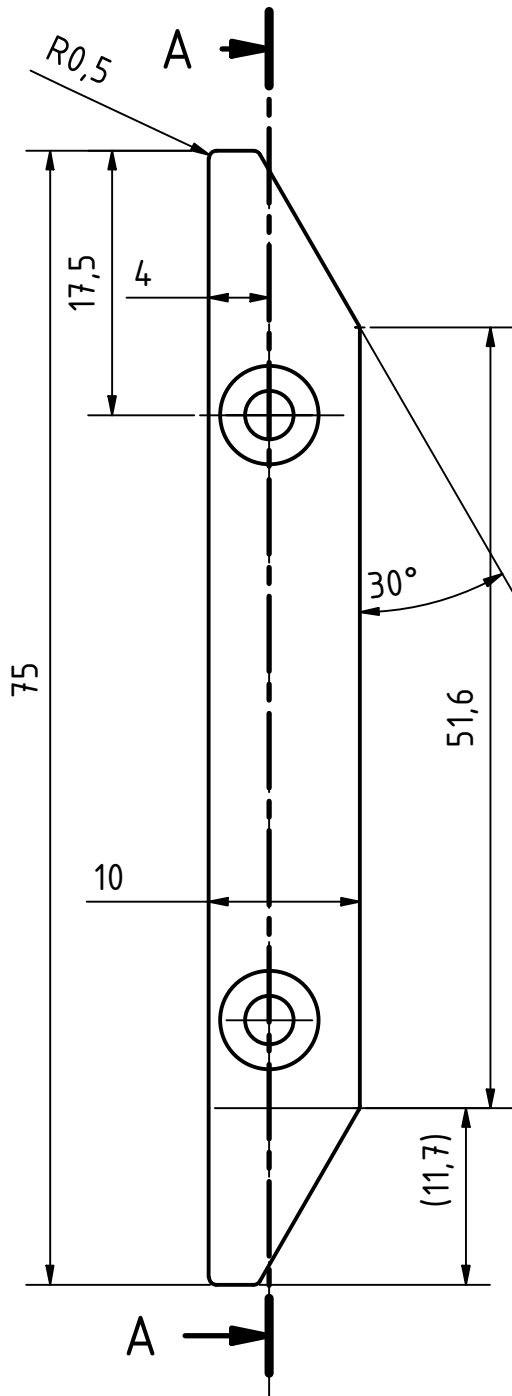


A-A (2: 1)



workpiece edges
DIN ISO 13715



general tolerances
DIN ISO 2768-m
surfaces
DIN ISO 1302

amount: 2

scale: 2: 1

material: X8CrNiS18-9

pre-product:

designation: Linear Guide

part number: ITPTv2.03.00.03

field of application: ITkPixTool v2.0

project: Atlas ITk Pixel Modules

				date	name
			designed:	12.03.2021	Rüdiger Widera
			approved:		
			status:	released	
			part rev.:	1.1	draw.rev.: A

1.1A	chamfer changed to 30° angle on both sides	18.05.22	Widera
rev.	alteration	date	name



GEORG-AUGUST-UNIVERSITÄT
GÖTTINGEN

2.Physikalisches Institut
Friedrich-Hund-Platz 1
D-37077 Göttingen

Tel.: 0551 3927625
tim.kanngiesser@uni-goettingen.de
ruediger.widera@uni-goettingen.de

sheet
1/1
A4