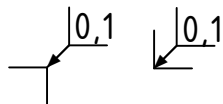
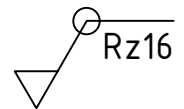
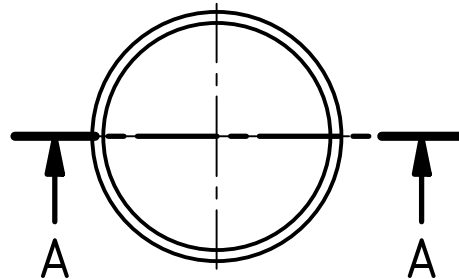
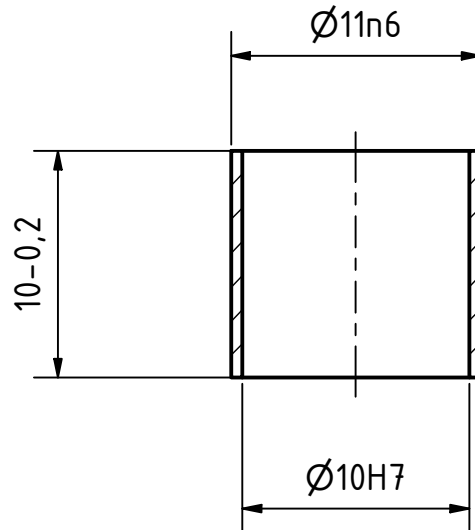


A-A (3: 1)



workpiece edges
DIN ISO 13715



general tolerances
DIN ISO 2768-m
surfaces
DIN ISO 1302

amount: 2

scale: 3: 1

material: X8CrNiS18-9

pre-product: Round Bar

rev.	alteration	date	name

date	name
designed: 30.03.2021	Rüdiger Widera
approved:	
status:	released
part rev.: 1.0	draw.rev.: A

designation: Rubberring Guide

part number: IPTv2.03.01.03

field of application: ITkPixTool v2.0

project: Atlas ITk Pixel Modules



GEORG-AUGUST-UNIVERSITÄT
GÖTTINGEN

2.Physikalisches Institut
Friedrich-Hund-Platz 1
D-37077 Göttingen

Tel.: 0551 3927625
tim.kanngiesser@uni-goettingen.de
ruediger.widera@uni-goettingen.de

sheet
1/1
A4